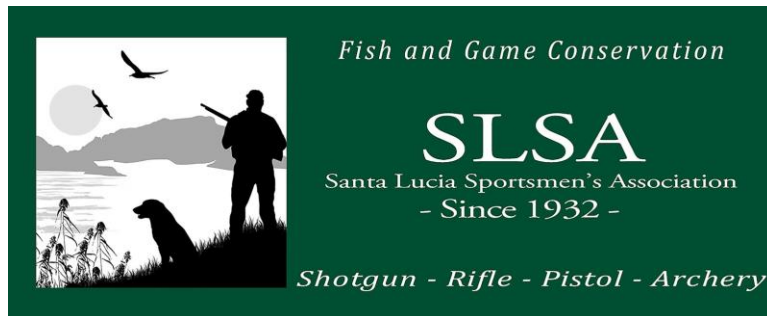


Santa Lucia Sportsmen's Association, Inc.

Operating Procedures & Range Rules

Effective May 1, 2023



Accepted and Approved by:

Santa Lucia Sportsmen's Association
P.O. Box 1077
Atascadero, California 93423
www.slsa.club

Jerry Zalusky

Jerry Zalusky, President

Ron Prescott

Ron Prescott, Executive Office

TABLE OF CONTENTS

SLSA Mission and Vision Statement	3
INTRODUCTION	4
CHAPTER 1: OPERATING PROCEDURES	4
CHAPTER 2: RANGE RULES	8
CHAPTER 3: SERVICE CREDITS	14
CHAPTER 4: EMERGENCY RESPONSE PLAN.....	16
1.Fire Emergency:.....	16
2.Medical Emergency:	17
APPENDIX 1: INCIDENT REPORT FORM.....	20
APPENDIX 2: SLSA COMMITTEE STRUCTURE	21
APPENDIX 3: SLSA COMMITTEE & MATCH APPLICATION	22
APPENDIX 4: WAIVER OF LIABILITY — RELEASE FROM RESPONSIBILITY.....	23
APPENDIX 5: Release of Liability Agreement	25
Special Purpose Range (SPR) use for CCW Practice.....	25
INSTRUCTOR LEAD MONTHLY WEEKEND PRACTICE	25
APPENDIX 6: Release of Liability Agreement	26
Special Purpose Range (SPR) use for CCW Practice.....	26
INDIVIDUAL LEAD WEEKDAY PRACTICE	26
Appendix 7: Special Purpose Range SOP for Concealed Carry.....	27

SLSA Mission and Vision Statement

MISSION

Offering recreational and competitive shooting sports for all men, women, families and youth in a safe, well maintained and friendly environment. We support our American heritage, the Second Amendment, individual liberty and our community.

VISION

To make the Santa Lucia Sportsmen's Association the place of choice on the Central Coast to compete, practice and improve shooting sports skills (hunting, archery, target shooting, etc.) at a safe and well-maintained facility.

INTRODUCTION

The Santa Lucia Sportsmen's Association ("SLSA"), a California nonprofit corporation, was founded in 1932, as a social organization to promote the sports of hunting and fishing and to give its members an opportunity to safely practice and enhance their shooting skills. SLSA has been at its present location since 1952. SLSA offers its members rifle and pistol ranges, trap and skeet fields, a law enforcement range and an archery range. SLSA provides its members with a safe and friendly environment to enjoy the shooting sports. SLSA emphasizes cordial relationship among its members and the safe handling of firearms.

SLSA encourages and welcomes all members of the community to join and use its facilities. SLSA does not discriminate on the basis of race, religion, color, national origin, sex, age, sexual orientation, familial status, disability status, and genetic information. SLSA insists that its members are of good character, socially responsible, law abiding, and act in a courteous and friendly manner.

Throughout the year SLSA hosts a variety of instructional classes for both juniors and adults. We have a junior rifle and a junior shotgun program sponsored by the NRA. They teach the fundamentals of marksmanship and trap shooting along with firearm etiquette and safety.

Membership in SLSA is a privilege, and not a right. Any Member that does not follow the Operating Procedures and Range Rules will be asked to leave and their membership revoked.

The SLSA facility is monitored by security cameras 24 hours a day, 7 days a week. Even if you are alone on a range all of the Operating Procedures and Range Rules must be followed. Your actions are being observed and recorded. Firearms are inherently dangerous. These rules and procedures are intended to provide a safe environment and ensure that the shooting ranges are available to future generations.

For more information on club events and classes offered visit our website at www.slsa.club

CHAPTER 1: OPERATING PROCEDURES

1. FACILITY and RANGES: SLSA's main facility is located at 10400 Santa Clara Road, Atascadero, California 93422. The facility consists of a club house, a trap and skeet range, a rifle range, a handgun range, an archery range, and an upper range for Club sanctioned events. The facility may be used by its members in good standing in accordance with the rules and procedures set forth below.

A meeting of the Board of Directors is held on the third Tuesday of every month. The meetings commence at 6:00 p.m. at the SLSA Club House.

The mailing address for SLSA is Santa Lucia Sportsmen's Association, P.O. Box 1077, Atascadero, California 93423. The E-mail address is slsaboard@gmail.com. The telephone number is (805) 466-9995. Additional telephone numbers for contact in case of an emergency are posted at the front gate.

2. MEMBERSHIP: Membership is available to United States citizens of good character, over the age of eighteen (18), that may legally possess a firearm in the State of California. To join SLSA a member must belong to the National Rifle Association ("NRA") and/or California Rifle and Pistol Association, ("CRPA")¹ and possess one of the following: California Hunting

¹ A prospective member may join the NRA and/or the CRPA through SLSA.

License; Hunter Safety Certificate; Military Training; Law Enforcement Training; NRA Training Certificate, Private industry certification of firearms training; CCW permit; DOJ Instructor Card; California Department of Fish & Wildlife Instructor Card; NRA Instructor Card; Women on Target Certificate, or GALS Certificate. Membership dues are accessed annually, and a member must pay the dues, in full, to activate the membership. The amount of the annual dues is fixed by the Board of Directors.

Membership is divided into two classes: Full Member and Associate Member. All members must comply with the Operating Procedures and Range Rules. All members have equal access to the facilities and ranges. The difference between the two membership classes is set forth in the Bylaws.

3. GATE CARDS: Each member is issued a gate card to enter and leave the facility. When scanned the gate card will open and close the entry gate and record the date and time the member entered and exited the property. Unless specifically directed by SLSA, a member must scan their gate card each time he/she enters and leaves the property. This rule applies even if the gate is open. There are NO EXCEPTIONS.

Each gate card is secured by a ten-dollar (\$10.00) deposit to be paid upon a member's admission. This deposit is refunded to the member upon termination of his/her membership. **A fifteen-dollar (\$15.00) is charged for all lost or replacement cards. (Revised 01-01-2023)**

4. GUEST AND PUBLIC USE: The use of the facilities and ranges by guests and the general public is restricted and strictly limited, as follows:

A. IMMEDIATE FAMILY: A Member's Immediate Family is (1) the spouse or domestic partner of a Member, (2) the Minor children or dependents of a Member, and (3) the Minor grandchildren of a Member.

A Member's immediate family may use the facilities and ranges with the Member. The host Member must be present and supervise his/her immediate family and ensure that all Operating Procedures and Range Rules are strictly followed. Each Immediate Family Member must wear a guest badge while on the rifle or pistol range. (Added 05-23-2021)

An immediate family member, over the age of eighteen (18) years, must read, sign, date and submit a "Release of Liability" form each time he/she uses any of the ranges. For each immediate family member under the age of eighteen (18) years, the host Member must read, sign, date and submit a "Release of Liability" form. A Member's immediate family is not required to pay a "Guest Fee".

A Member's child, dependent or grandchild over eighteen (18) years of age is a Guest and subject to the provisions of Paragraph 4C. (Amended 05-16-2017)

B. MINORS USING THE RIFLE OR HANDGUN RANGE:

(1.) The term Minor means a person less than 18 years of age.

(2.) A Minor between the ages of 12 and 18 years of age is permitted on the rifle and handgun ranges, if all of the following conditions are satisfied:

(a) The Minor is an Immediate Family Member as defined by Paragraph 4A of the Operating Procedures.

(b) The Minor has successfully completed a Firearm Safety Class. Any recognized safety instruction is permissible including courses offered through California Hunter Safety, National Rifle Association, Boy Scouts of America, 4H Clubs, or SLSA.

(c) The Minor is, at all times, on the rifle or handgun range with the host Member; and

(d) The Minor is fully supervised by the host Member and all Operating Procedures and Range Rules established by SLSA are strictly observed.

(3.) A Minor between the ages of 9 and 12 years of age is permitted on the rifle range, if all of the following conditions are satisfied:

- (a) All of the conditions set forth in Paragraph 4B (2), above, are satisfied.
- (b) The host Member does not handle or fire any firearms, except to directly instruct the Minor in its use and operation.
- (c) The firearm used by the Minor is loaded with only one (1) round at a time; and
- (d) The host Member may bring no more than one Minor less than 12 years of age per visit to the range.

(4.) A Minor less than 12 years of age is not permitted on the handgun range at any time.

(5.) A Minor less than 9 years of age is not permitted on either the rifle or handgun range at any time.

(Added 05-16-2017)

C. GUESTS: A Member may host a guest(s) to use the ranges, as follows:

- (i) A Member may host no more than Two (2) Guests per visit.
- (ii) Guests are permitted on the ranges only on SATURDAY and SUNDAY unless prior approval is obtained from the Rangemaster (see below).
- (iii) Guests must be eighteen (18) years or older. No minor may qualify as a Guest.
- (iv) Each Guest must read, date, sign and deposit the “Release of Liability” Form provided. Each Guest must wear a Guest Badge while on the rifle or pistol range. (Added 05-23-2021)
- (v) **Each Guest must pay a range fee of Fifteen Dollars (Revised 01-01-23).**
- (vi) The Hosting Member must remain with his/her Guest(s) and ensure strict compliance with all Operating Procedures and Range Rules.
- (vii) A person may use the ranges as a Guest only one (1) time if they reside within 50 miles of the Club; subsequent use requires an SLSA membership; and
- (viii) A Member that fails to strictly adhere to these Guest Rules shall be subject to discipline that may include revocation of further guest privileges and/or membership rights.
- (ix) Exceptions to the Guest Policy (ii and vii) will be considered on a case-by-case basis. Please contact the Club Rangemaster for clarification and consideration at rangemaster@slsa.club at least 48 hours prior to visit. (Revised 05-23-2021)

D. PUBLIC USE: The general public may use the facilities and ranges for certain events, special shoots, and matches. SLSA hosts public events (e.g., Trap, Skeet, Rifle, Black Powder, Archery, Varmint Rifle, DCM Rifle, High Power Rifle, Tactical Pistol, Junior Rifle and Hunter Safety). Public events are posted on the SLSA web site [www.slsa.club].

E. COMMERCIAL USE: Any Commercial use of the facilities or ranges must be approved, in writing, by the Board of Directors. The Ranges and facilities may be rented or borrowed for private gatherings or events, training, or instruction. Proof of insurance, a cleaning deposit or other security is required. A member may not designate a student or a client as a “guest” for private instruction without Board approval.

5. VOLUNTEER SERVICE: SLSA is a social and recreational organization. Members are required if they are able to volunteer time to SLSA by joining a Committee or Match Group, participating in a scheduled work party, assisting at special events and matches, or participating in sponsored events. A Member may deduct up to Ten Dollars (\$10) from the annual dues for each earned service credit that directly benefits SLSA up to a maximum of Thirty Dollars (\$30).

To qualify and maintain Full Membership status, a Member must provide a minimum number of service credits per year. See Chapter 3 on Service Credits for details.

6. RANGE SAFETY OFFICERS: The Directors, Officers, NRA Certified Range Safety Officers, Safety/RSO Committee Members, and all Committee Chairmen are authorized to address observed rule violations and may refuse any person the use of the range. If you are asked to either comply with a Range Rule or to leave the range for a rule violation, please follow the directions. If you believe the action was not warranted, you may attend a Board meeting to address the issue.

Every Member is expected to follow the Operating Procedures and Range Rules, and to file an Incident Report of any person observed violating the Range Rules.

7. ALCOHOL AND DRUG POLICY: SLSA does not permit the possession or consumption on its property of any legal or illegal drug or narcotic; including cannabis and marijuana. Anyone in violation of this rule will be required to leave the premises and law enforcement shall be notified. A member in violation of this rule shall be terminated for life.

SLSA allows the consumption of alcoholic beverages at certain events and social gatherings in specifically designated areas of the facility. These areas include the clubhouse and adjacent parking lots. No alcohol or alcoholic beverage is permitted by or on any of the firing ranges.

No person may enter the firing line or engage in any “live fire” on any range after consuming any amount of alcohol or after taking a prescription or nonprescription drug or narcotic that impairs motor function. Any person consuming an alcoholic beverage and/or a drug or medication that impairs motor function shall not handle any firearm or firearm on SLSA property within eight (8) hours after ingestion of the beverage, drug and/or medication.

A person in violation of these rules or found to be under the influence of an alcoholic beverage or intoxicating substance shall be required to leave the premises and, if a Member, shall be brought before the Board for disciplinary action.

8. LOSS OR RESTRICTION OF MEMBERSHIP PRIVILEGES: The Operating Procedures and Range Rules are enacted for the welfare and safety of all Members. A Member in violation of the rules and procedures is subject to the loss or restriction of their membership privileges. The Board has discretionary authority to impose a wide range of sanctions against an offending Member; including revoking his/her membership and to bar the offender for life from rejoining SLSA. A Member is entitled to a hearing before the Board prior to the imposition of sanctions. The rules and procedures governing disciplinary hearings are set forth in the Bylaws.

9. DISPLAY OF MEMBERSHIP CARDS: Every Member shall wear their membership card in a visible location while on the rifle and handgun ranges. Exceptions to this rule include special events, matches, meetings, the Archery Range, and the Trap and Skeet Range.

10. DISPLAY OF RANGE RULES: The Range Rules are displayed at the Rifle, Pistol, and Shotgun ranges. The Range Rules are also available on the SLSA website and upon request.

11. SPECIAL EVENT AND MATCH FEES: A fee may be charged to participate in a special event or match. Such fees are common in Varmint Rifle, Black Powder, High Power, DCM, Junior Rifle, Tactical Pistol, and Archery matches. The fee amount is determined by the Match Director. For fee information contact the appropriate Match Director. Subject to the discretion of the Match Director, all matches, events and competitions sponsored by SLSA shall be governed by the current rules and regulations set down by the recognized governing authority.

12. MODIFICATIONS TO RULES: The Board, in its discretion, may modify or change any of the Operating Procedures or Range Rules. Such modifications may be permanent or temporary. Members will be notified of any changes through the SLSA web site. Temporary changes will occur to allow a special event or match to host a particular shooting event. For example, black powder matches routinely shoot rifles and pistols on the rifle range and in front of the firing line. Temporary changes to the Rules and Procedures are allowed only during the special event or match and under the direction of the Committee Chairman, a Director or a Range Safety Officer.

CHAPTER 2: RANGE RULES

1. SHOTGUN RANGE RULES: SLSA maintains four (4) ranges for trap and/or skeet. These Ranges are open Wednesday evenings from 5:00 to 9:00 p.m. and on Sunday from 9 a.m. to 1 p.m. Skeet hours will vary from time to time. Special Events and extended shooting hours are subject to approval by the Board of Directors. There is a separate cost for shooting trap and skeet. Members and juniors are charged at a lower rate than nonmembers. For more information contact the Trap and Skeet Chairmen.

Hearing and eye protection is MANDATORY for all persons using the Shotgun ranges. All shotguns must be unloaded and the actions open, except on the firing line. All NRA gun safety Rules are enforced on the Shotgun Ranges. Trap shooters must use #7.5 shot or smaller. Skeet shooters must use #8 shot or smaller. Larger shot, buck shot and slugs are strictly prohibited.

Hand launchers or personal clay throwers may be used on Trap Field #4, when not in use. The clay targets must travel no farther than the field in front of the club trap house and all shooting must be directed toward the hill.

The patterning board on the right edge of Trap Field #4 may be used only if that field is not occupied. Only #7.5 shot or smaller is permitted. No steel shot is allowed.

Safety Procedures:

1. Hearing and eye protection is MANDATORY for all persons using the Shotgun ranges.
2. All shotguns must be unloaded, including empty shells and the actions open, except on the firing line. A break open shotgun may be closed when it is in the gun rack but it shall not contain a live or empty shell.
3. All shotguns, except break open, will be transported with the action open and the muzzle pointing up. Break open shot guns will be broken open. All NRA gun safety Rules are enforced on the Shotgun Ranges.
4. All trap help must have a flag or other warning device to warn of any person(s) exiting from the trap house.
5. When trap house is being loaded shooters must remain behind chain link fence until trap house loader is clear of field.
6. The practice of tracking targets behind a shooting squad is prohibited.
7. A shooter shall place a live shell in their gun only when on a post facing the traps. In Singles and Handicap shooting, the shooter may place only one (1) live shell in their gun at a time and must remove it or the empty shell(s) before moving from one post to another. In Doubles shooting, the shooter may place two (2) live shells in their gun at a time and must remove both live and empty shells before moving from one (1) post to another. In changing from one (1) post to another, the shooter shall not walk in front of the firing line and all actions will be open.
8. Pick up your empty shotgun shell hulls only after the squad has completed shooting. DO NOT sweep any person with the muzzle of your firearm at any time.

9. While not prohibited, the practice of resting the muzzle of a shotgun on a shooter's foot is ill-advised and is discouraged.
10. Only shooters shooting at the time and shoot officials may be on the field during a shoot.
11. No Shooting from Skeet position #1 when the rifle range red lights are on.
12. No Tactical shotguns on the Trap and Skeet fields. Tactical shotguns may use patterning boards. Tactical shotguns may use the rifle range with slugs only.

2. MUZZLELOADERS / BLACK POWDER RANGE RULES: MUZZLELOADERS are any muzzle loading rifle or pistol that loads from the muzzle, or into the chamber of a revolver cylinder. SLSA encourages use of the rifle and pistol ranges for muzzleloader / black powder practice and competitions. For more information contact the Muzzle Loader / Black Powder Chairmen.

Safety Procedures:

1. SAFETY GLASSES and HEARING PROTECTION are required.
2. CARRYING MUZZLELOADERS, RIFLES AND PISTOLS - Muzzleloaders, rifles and pistols will be carried between the loading benches and the firing line with the muzzle above the shooter's head and pointed directly up.
3. BLOWING DOWN THE BARREL - There will be NO blowing down the barrel that requires the head to be in front of the muzzle. A flexible blow tube may be used at the shooter's option, provided that the shooter's head is not placed in front of the muzzle.
4. LOADING FLINTLOCK MUZZLELOADERS - All flintlock muzzleloaders must be loaded with the frizzen and hammer in the forward position.
5. SWABBING BETWEEN SHOTS - Swabbing between 2 shots with a damp patch to eliminate the possibility of glowing embers igniting the next powder charge is recommended.
6. CAPPING/PRIMING - shooters may cap/prime only on the firing line with the muzzle pointed down range.
7. LOADED MUZZLELOADER, RIFLE OR PISTOL - No loaded muzzleloader, rifle or pistol shall be taken from the firing line.
8. CLEARING MISFIRES - Extreme caution must be used, including reasonable care to inform neighboring shooters. The removal of the ball or bullet must be done in such a manner that there is no danger to persons or property. The use of a CO2 ball discharger is recommended and is considered the safest method of ball removal.
9. Black powder or any BATF approved black powder substitute only.
10. POWDER MEASURE - A separate powder measure or holder will be used to carry the powder charge from container to the muzzle of the gun. Charging directly from horn or flask is unsafe and is not permitted.
11. OPEN POWDER CONTAINERS - There will not be any open containers of powder or powder substitute on the firing line or loading benches of any range.
12. Handguns
 - a. No capping or priming until the handgun is pointed down range on the firing line.
 - b. Load all flintlocks with frizzen open and hammer down.
 - c. The cylinder of a revolver, whether it is in the pistol or not, is "hot" if it is loaded and will not be capped until it is in the revolver and pointed down range on the firing line.
 - d. All loaded chambers will be capped prior to firing the first shot.
13. Pistol stands and equipment placed on the front bench should be kept to a minimum.

3. RIFLE AND HANDGUN RANGE RULES: The rifle and handgun ranges are available to all Members. These ranges are open every day from 9:00 a.m. until 4:30 to 6:00 p.m. depending on the season. No shooting before 9:00 am unless explicitly allowed for a SLSA Club sanctioned event. Rifle and Pistol Range opening and closing times will be signified by a short horn blast. (*Added 05-23-2021*) The cease fire time is also found on the SLSA web site. In certain instances, the Board may change the range hours to accommodate a special

event or other circumstance. Any Member discharging a firearm either before or after range hours shall have his/her membership revoked.

A. PERMITTED FIREARMS: Only the following firearms may be discharged:

On the rifle range:

- a. A Centerfire or Rimfire Rifle using a cartridge less than .50 caliber.
- b. A Muzzleloader using a .75 caliber projectile or less.
- c. A Shotgun using slugs; and
- d. A single shot Handgun using a centerfire rifle cartridge less than .50 caliber and discharged from the bench.

On the handgun range:

- a. A revolver or semi-automatic pistol using a centerfire or rimfire cartridge less than .50 caliber.
- b. A Muzzleloader pistol using a .69 caliber projectile or less; and
- c. A Rimfire rifle .22 caliber or less.

The following firearms are **prohibited on both the Rifle and Handgun Ranges:**

- a. A machine gun or a firearm capable of automatic fire.
- b. A shotgun loaded with any size shot.
- c. Any handgun on the rifle range capable of holding more than a single round.
- d. Armor-piercing, tracer, reactive, incendiary, or explosive ammunition; and
- e. A firearm that uses a .50 caliber BMG case regardless of bullet diameter.

B. SAFETY LIGHTS: Red flashing safety lights are installed at the Rifle and Pistol Ranges. They are to be manually activated anytime a 'cease fire' is called or when anyone moves forward of the shooting line. The control switch to turn 'on' and 'off' the lights for each range is located near the center of the shooting line.

IF THE RED FLASHING LIGHTS ARE "ON", DO NOT FIRE, STEP AWAY FROM THE BENCH AND STAND BEHIND THE YELLOW LINE. If you see an un-safe condition, turn on the lights and call a 'CEASE FIRE'. Safety is everyone's responsibility. When in doubt DO NOT FIRE.

C. SAFETY PROCEDURES: The following procedures shall be observed by all persons:

- a. Hearing and eye protection must be worn, at all times, while on the Rifle, Handgun or Shotgun Range.
- b. All firearms except black powder rifles must be in a case when brought to the Rifle and Handgun Ranges and shall be cased and uncased only on the firing line. Waivers to this rule can be granted for Club sanctioned events by the Director responsible for that event. *(Revised 05-23-2021)*
- c. The loading of any device that holds a supply of cartridges (magazines, clips, etc.) for rifle or pistol will be done **ONLY** on the front bench (firing line). Waivers to this rule can be granted for Club sanctioned events by the Director responsible for that event. *(Added 05-23-2021)*
- d. A loaded gun has no place at the range other than the firing line. When carrying a firearm, it must be unloaded, the action should be open, and the muzzle pointed in an upward position.
- e. No firearm on the Handgun Range may be handled, loaded or unloaded behind the "Yellow Safety Line".
- f. Except when in the possession of the shooter on the firing line during live fire, all firearms must be unloaded with the actions open.
- g. A rifle's action is open when the bolt or slide is locked back, and the magazine is removed.
- h. A pistol action is open when the cylinder is open, or the slide is locked back and the magazine is removed.
- i. An open bolt indicator must be inserted into any firearm that is either unattended or left on the shooting bench during a cease fire.

- j. During a “cease fire” all persons shall secure their firearms and step back and remain behind the “Yellow Safety Line”. No firearm may be handled during a “cease fire”. This includes cased firearms or firearms placed on the racks or the tables behind the firing line.
- k. No rapid fire is permitted. You must allow at least one second between shots.
- l. Never cross in front of the firing line during “live fire” for any reason. This includes firing a firearm in front of the firing line or retrieving dropped ammunition or brass during a “live fire” period.
- m. When shooting from a standing position on the rifle range, the shooter's shoulders and muzzle position should be in line with the adjacent seated positions.
- n. When shooting from an open position on the pistol range, the shooter's shoulders and muzzle position should be in line with the adjacent firing bench positions.
- o. Notify the RSO, if present, when there is a firearm stoppage or malfunction.
- p. Dry firing is permitted only at the firing line and only when authorized.
- q. No person shall go behind the permanent target boards for any reason during shooting hours.
- r. No item that obscures a shooter is permitted on a firing bench. All large gun cases and gear bags shall be kept either on or under the back bench.
- s. All persons using the Rifle and Handgun ranges must follow all instructions on the posted signs.
- t. The NRA gun safety rules are observed and enforced.

D. TARGETS: The rifle range has target board positions at 25, 50, 75 and 100 yards. The handgun gun range has target boards from 7 through 50 yards. Only paper targets placed on a provided target board may be used. Steel targets may be used if approved by the Board. No other targets are permitted, including reactive or explosive targets, bottles, cans, rocks or items of opportunity.

To reduce ricochets, the shooter must shoot into the vertical embankment behind the target boards. All targets must be placed on the face of the target board and be not less than three (3) feet from the ground. Targets may not be placed on or over the back stop supports or uprights. The 200-yard target house on the rifle range is closed and may not be fired at. No person may fire at a target beyond the 100-yard target board on the rifle range or the 50-yard target board on the handgun range without authorization from the Board or the acting Range Safety Officer.

E. HOLSTER AND CONCEALED FIREARM POLICY: Except as provided in this paragraph, no person may carry a holstered or concealed firearm, whether loaded or unloaded on SLSA property.

- a. **CONCEALED:** A Member may carry a concealed handgun on SLSA property under the following conditions:
 - (i) Holds a /valid CA CCW permit
 - (ii) Has attended at least one SLSA Monthly CCW Practice session, passed the “gear check “and deemed proficient by the SLSA RSO / Instructor
 - (iii) the firearm is listed on that permit and remains concealed at all times unless the firearm is being removed/replaced at the pistol range firing line per the procedure below.
 - A firearm may be removed from concealment only for the purpose of target shooting and only within the holster draw area (southeast end of pistol range and to the right of (behind) the painted red line.)
 - Once removed from the holster, the firearm is to be unloaded (cleared) (cylinder open or slide locked and magazine removed)
 - Once unloaded (cleared), the firearm is to be transported from the holster draw area with the firearm unloaded (cylinder open or slide locked and magazine removed) with the muzzle pointed in an upward position and the general rules (below) are to be followed
 - Once target shooting has been completed the firearm may be brought back to the holster draw area (following the applicable transport procedures) reloaded with self-defense ammunition, re-holstered and re-concealed

b. **HOLSTERED:** A person participating in a special event or sanctioned match may carry a holstered handgun under the direction of a Range Safety Officer, the event instructor, or the match chairman; provided the carrying of a holstered handgun is an integral part of the event or match. Please see applicable SLSA SOP addendums as they become available for additional information.

c. **GENERAL**

- (i) The handgun, whether loaded or unloaded, is holstered only in the designated holster draw area located on the handgun range
- (ii) transport of a firearm to and from the holster draw area will be done with the firearm unloaded (cylinder open or slide locked and magazine removed) with the muzzle pointed in an upward position,
- (iii) The firearm shall be unloaded, cylinder open or slide locked and magazine removed, and placed on the front bench with muzzle pointing toward the target boards, if a cease fire is called or a person is down range.
- (iv) Members may only use a controlled straight draw to remove the handgun from the holster²;
- (v) no draws from concealment, only strong side outside waistband holsters may be used on the pistol range, and
- (vi) All other range rules are observed.

² The draw must be performed in a controlled manner. The shooter must be standing and facing the target. No quick draws or cross draws are permitted.

4. ARCHERY RANGE RULES: The Archery Range is located on the westerly portion of the property. This range is open every day from 8:00 a.m. to dusk to all Members. Targets range from 10 to 80 yards. Only archery equipment is permitted on this range. Crossbows, firearms and other firearms are prohibited. Arrows must have field points. No broad heads or hunting arrows are allowed. Archers must launch their arrows standing at the firing line. No person shall cross the firing line until a cease fire is called and all archers secure and place their bows in a rest.

The Archery Range is CLOSED when any of the Trap and Skeet machines are in use.

5. SPECIAL PURPOSE RANGE: A range dedicated to firearm training and special events and is located at the easterly end of the facility. This range is closed to Members except as called out in the SOP or SOP addendums and may be used only as authorized by the Board. Access and use of this area must be directly supervised by a Director, Officer, NRA Certified Range Safety Officer or Firearms Instructor. Violators are subject to the loss of membership. If you want to use this area for a special activity, you may submit a written request to the Board of Directors for consideration. Persons having authorization to use this range are charged with the responsibility to clean the range of all trash and spent brass and to secure it after every use.

6. NRA GUN SAFETY RULES: Every person that handles a firearm or uses any SLSA Range shall follow the NRA Rules for Safe Gun Handling. These Rules are:

A. Fundamental Rules for Safe Gun Handling:

- Always* keep the gun pointed in a safe direction.
- Always* keep your finger off the trigger until ready to shoot.
- Always* keep the gun unloaded until ready to use.

B. Rules for Safe Use:

- Know your target, what is in the line of fire and what is beyond it.
- Be sure the gun is safe to operate.
- Know how to use the gun safely.
- Use only the correct ammunition for your gun.

Wear eye and ear protection as appropriate.
Never use alcohol or drugs before or while shooting.
Always treat all guns as if they are always loaded.

C. General Safety Rules:

Know and obey all range commands.
Know where others are at all times.
Shoot only at authorized targets.
Do not handle a firearm while others are downrange.
Do not stand at the firing line while others are downrange.
Stop shooting immediately upon the command of “**Cease Firing!**”

7. POST SHOOTING RESPONSIBILITIES: Every Member is responsible to keep the ranges and SLSA property clean at all times. When finished using a range, a Member shall remove his/her target(s), return the target stands and clean up his/her shooting area of all trash and spent brass thoroughly wash their hands with soap and cold water or lead removal wipe (e.g. Hygenall LeadOff). Brooms, dust pans and trash containers are located near the tables behind the firing lines. Spent brass may be deposited in the marked containers. Before leaving inspect the area to ensure that you have collected all of your belongings.

CHAPTER 3: SERVICE CREDITS

1. POLICY: SLSA requires Full Members to accrue five (5) service credits per year to maintain their full membership status. Associate Members must accrue fifteen (15) service credits and be a member for five (5) consecutive years to qualify for full membership. The reasons for requiring members to accrue service credits are:

(A) SLSA is a “social and recreational club” that enjoys favorable tax status as a nonprofit corporation under IRC 501(c) (7). To qualify SLSA must encourage the “commingling” of its members for social, recreational, or similar purposes”.

(B) SLSA recognizes that its members possess a broad range of skills, talents, and experiences. SLSA wants its members to participate in the operation and governing of SLSA and contribute a small portion of those skills, talents, and experiences to benefit both SLSA and its members; and

(C) For more than ninety years, SLSA has had a positive impact on both its members and the community at large. In order to continue to have a positive influence, the membership must take an active interest in the operation and governing of SLSA.

2. WHAT IS A “SERVICE CREDIT”: A Service Credit is a unit of participation by a member in the events, operations or governing of SLSA. The term service credit is to be broadly defined to include all forms of membership participation that directly or indirectly benefit SLSA.

3. EXAMPLES OF “SERVICE CREDITS”: A Service Credit is awarded to a member for participation in any SLSA sponsored event or match, volunteering assistance in its operations, and participating in the governing or administration of SLSA. For example, a member is awarded a service credit for participating in any of the monthly matches held for rifle, pistol, shotgun, and archery. A member is also awarded service credits for volunteering his/her time to assist one of SLSA’s Committees or help in organizing or running one of the events or matches. Service credits are also awarded for participating in the governing of SLSA; such as attending a general meeting, providing assistance to an officer or board member in performing their duties, or holding an office or a position on the Board.

4. HOW MANY “SERVICE CREDITS” ARE AWARDED PER PARTICIPATION: A member is awarded one (1) Service Credit for each time he or she participates in a sponsored event or match. One (1) Service Credit is awarded for each General Meeting attended by a member. A member can fulfill all of his or her Service Credits by joining a Committee or a sponsored match or event group and providing assistance, as requested. The Committee Chairman or Group director for which the member’s participation occurs shall determine the number of Service Credits earned for the participation.

5. WHAT IF I DO NOT WANT TO PERFORM ANY “SERVICE CREDITS”: Service credits are a means of promoting membership participation in SLSA. They are not compulsory.

A member that does not participate has the right to use the facilities and ranges to the same extent as a fully participating member. The annual dues are the same for both Associate and Full Members.

If a Full Member does not fulfill the annual Service Credit minimum, he or she will lose the rights and privileges of Full Membership and become an Associate Member.

An Associate Membership is a non-equity membership in SLSA. An Associate Member may not vote in SLSA elections, hold an elective office, nor have any rights granted to a Full Member pursuant to the Bylaws and the California Corporations Code. (See Bylaws for details).

A member that does not perform any service credits that directly benefit SLSA may not claim any credit toward the annual dues.

6. WHAT IF THE MINIMUM “SERVICE CREDITS” ARE NOT EARNED: A Full Member that does not earn the minimum number of annual Service Credits will be listed on the membership roll as an Associate Member the following year, and will lose the rights of full membership. A Full Member that has lost full membership due to insufficient participation shall be restored to full membership by (i) earning the number of missed Service Credits for the prior year(s), and (ii) earning the minimum number of Service Credits for the current year.

For example, if a member only earns three (3) Service Credits in 2017, he or she will be an Associate Member for 2018. Provided the member earns seven (7) Service credits in 2018, the member will be restored to Full Membership in 2019.

7. WHAT IF I AM UNABLE TO PROVIDE ANY SERVICE TO SLSA: If for any reason a Full Member is unable to earn Service Credits, the member shall contact the Board, in writing, and explain the reasons. The Board will consider all the reasons for inability to provide service and will either grant an exemption from service or seek to accommodate the member with an alternative to service. A request for excuse of service will be liberally considered.

8. ARE SOME “FULL MEMBERS” NOT REQUIRED TO PERFORM “SERVICE CREDITS”:

Yes, A Full Member is not required to perform additional service or earn any service credits, as follows:

(a.) Life Members are not required to perform any additional service credits to maintain his or her Full Membership. A Life Membership is an honorary award granted to a member that distinguishes himself or herself for extraordinary service and dedication to SLSA; and

(b.) A Full Member that is seventy (70) years or older, and has been a member for, at least, five (5) years is not required to perform any additional service or earn Service Credits.

9. CAN “SERVICE CREDITS” BE USED AS A PARTIAL CREDIT TOWARD ANNUAL DUES?

Yes, a member that earns service credits that constitute a “direct benefit” may deduct ten dollars (\$10) per Service Credit for a maximum of thirty dollars (\$30). A “direct benefit” is defined as a Service Credit earned by the member using his or her time and skill to improve or maintain the operations, governing or reputation of SLSA.

For example, providing time and service to a Committee or assisting in the conduct and operation of an event or match will qualify as a direct benefit to SLSA and entitle the member to a partial deduction toward the annual dues. A member’s participation in a sponsored event or match, becoming a member of a Committee without performing actual service, or mere attendance at a general meeting is an indirect benefit to SLSA, and while constituting a “Service Credit” does not entitle the member for a partial deduction toward the annual dues.

Additional incentives and credits toward the annual dues may be granted to members participating in certain activities, or as determined by the Board to be appropriate for a member providing extraordinary service.

10. REPORTING “SERVICE CREDITS”: Each member shall state in their application for renewal of membership the total number of service credits earned the prior year. The member may also claim a credit of ten dollars (\$10), not to exceed thirty dollars (\$30), for each qualifying Service Credit that was a direct

benefit to SLSA.

SLSA reserves the right to audit a member's claim for earned Service Credits up to one year following the date of the application for membership renewal. If requested to provide proof of earned Service Credits, a member must obtain and submit a certificate from the Committee or group served signed by the Committee Chairman or Director stating the number of Service Credits earned during the prior year.

11. SERVICE CREDIT ROLLOVER: If a Full Member is unable to earn the minimum number of Service Credits required, the member may rollover excess Service Credits earned during the prior year; provided (a) the Service Credits qualify as a direct benefit to SLSA, and (b) the rollover Service Credits were performed no later than two (2) years from the time the rollover is requested. Rollover Service Credits may not be applied for credits toward the annual dues.

12. SERVICE CREDITS ARE NOT TRANSFERABLE: Service Credits are the property of the member earning the credit and may not be transferred or assigned.

13. COMMITTEE DIRECTORY: Attached as Appendix 2 is a "SLSA COMMITTEE STRUCTURE" describing the Committees and Groups that a member may join to earn qualifying Service Credits. To join a member will contact the Committee Chairman or Group Director, at the number or address provided, and state their particular skills, ability and availability to assist that Committee or Group. The Committee Chairman or Group Director shall have the discretion to accept or decline the member based on the information provided. If declined, the member shall make an effort to join another Committee or Group.

14. WHAT IF I JOIN A COMMITTEE AND AM NOT ASKED TO PROVIDE ASSISTANCE: A member that joins a Committee or Group and is not requested to participate in any of the Committee or Group's activities during the membership year or given the opportunity to fulfill all the Service Credit requirements, will be deemed to have earned all required Service credits for that year.

However, Service Credits earned by nonparticipation may not be used by the member for credits toward annual dues.

CHAPTER 4: EMERGENCY RESPONSE PLAN

1. Fire Emergency:

Each SLSA member is an integral part of the Fire Safety Program. This responsibility must be taken seriously. It is our duty to protect fellow members and guests from accidents and fires. Safe range conditions and the knowledge of how to respond to an emergency are often the difference between safety and serious injury, or even death. The best protection is prevention.

Prevention means that every member keeps the ranges and adjacent areas neat and clean, follows all Operating Procedures and Safety Rules, and knows the procedures for notification and activation of the Fire Plan. It is the responsibility of every Match Chairman, Range Safety Officer and Director to implement and follow these guidelines.

I. FIRE RESPONSE PLAN: If a fire occurs, remember the acronym **R-A-C-E-R**:

- **RESCUE:** In the event of a fire, rescue those persons that can be rescued safely, as well as you, by proceeding to an area out of the immediate location.
- **ALARM:** If you smell smoke, see fire, or see smoke, dial 911 and report the problem.
- **CONFINE:** If indoors close all windows and doors in your area. This will confine or slow the spread of smoke and fire.
- **EXTINGUISH:** If you can do so safely, extinguish the fire if it is small, contained or not spreading

beyond the immediate area. Fire extinguishers are located in the clubhouse and the target shed. Learn their location in your work area.

Remember, these fire extinguishers are designed to put out a small fire. If the fire has spread beyond the area of origin, or it cannot be put out safely, then confine the area.

To operate a Fire Extinguisher, remember the word PASS:

PULL the pin. Hold the extinguisher with the nozzle pointing away from you and release the locking mechanism.

AIM low. Point the extinguisher at the base of the fire.

SQUEEZE the lever slowly and evenly.

SWEEP the nozzle from side to side. For outdoor fires, shovels are available at the rifle range house and club storage building.

RELOCATE: Relocate people to a safe area away from the fire.

II. RESPONSIBILITIES IN THE EVENT OF A FIRE

A. Member Suspecting/Locating a Fire: That member who suspects or locates a fire has a duty to protect him/her and others, as outlined above in the SLSA Fire Response Plan.

B. Member/Committee Chairman Responsibilities:

1. Follow the SLSA Fire Response Plan (R-A-C-E), as outlined above.
2. Advise visitors/guests to stay in their location.
3. Should evacuation of an area become necessary, it will be the responsibility of member, committee chairman or RSO on duty in the area to account for visitors, prior to and after evacuation.
4. Once fire is contained or extinguished, report in complete detail to the Club President or a Director the details of the incident.

2. Medical Emergency:

Each SLSA member is an integral part of the Safety Program. It is our duty to protect fellow members and guests from accidents. The best form of protection is prevention. Safe range conditions and the knowledge of what to do in an emergency can mean the difference between safety and serious injury, or even death. Prevention means that every member is charged with the responsibility of:

- A.) Knowing SLSA procedures for notification and activation of the Emergency Response Plan.
- B.) Keeping the ranges and adjacent areas neat and clean; and
- C.) Performing activities in a safe manner.

It is the responsibility of every Match Chairman, Range Safety Officer and Director to implement and follow these guidelines.

I. MEDICAL EMERGENCY RESPONSE PLAN: If present during a medical emergency, you shall assess the situation, and depending upon your qualifications take the following steps:

1. Take Charge of the Situation. The Event Committee Chairman or Range Safety Officer on duty should take charge of the situation should an emergency occur. Here is an example scenario:

Command "Cease Fire, Cease Fire. Unload and stay in position."

Move to the scene.

Evaluate the seriousness of injury.

-For a Minor Injury:

- Render aid.
- Direct person to seek appropriate medical attention.
- Commence firing.
- Complete report for the record.

- For a Major Injury:

- Render Aid.
- Task someone to call 911.
- Task someone to direct the emergency vehicle to the incident location.
- Task someone to assist in recording the times and actions taken during the emergency.
- Task all witnesses to write down what they saw for the Emergency Report.
- Continue aid until Emergency Medical Support (EMS) arrives.
- Complete Incident Report for the record.

2. Render Aid.

- First Aid Kits are located in the Clubhouse and Rifle Range House.
- If the person in charge has any doubts as to whether an injury can be treated, call for EMS.
- California's Good Samaritan Law protects people from lawsuits if they render medical care in an emergency situation. (*California Health & Safety Code Section 1799.102*)
- It is strongly encouraged that Directors, Event Committee Chairman or Range Safety Officer's obtain American Red Cross First Aid and CPR Training, or equivalent.

• Aid procedures

1. Identify self to the injured.
2. Inform injured of training (American Red Cross Standard First Aid & CPR).
3. Inform injured of aid offered.
4. Receive verbal permission from injured (if adult), or parent/guardian (if child) prior to giving care.
5. Refrain from giving care to a conscious injured person who objects.
6. Assume implied permission if the injured is unconscious or unable to respond.
7. Assume implied permission if the injured is a child with a serious injury and a parent or guardian is not present.
8. Move the injured only if life is endangered.
9. Check injured for life threatening condition before providing care. Provide care only within level of training.
10. Never dispense aspirin or medications; administer activated charcoal or syrup of Ipecac (or other treatments) unless directed by EMS or Poison Control Center.

3. Call for Help.

- Call 911 from the telephone located in the office inside the clubhouse.
- Call 911 from a cell phone.
- Direct EMS to 10400 Santa Clara Road, Santa Lucia Sportsman's Shooting Range.
Also give nearest cross street at El Camino Real.

- Wait for EMS to hang up first to make sure they don't need further information.

4. Direct EMS (Medical help) to location.

- A person should be positioned to meet the emergency vehicle to ensure no time is lost getting help to the injured.
- Direct EMS to 10400 Santa Clara Road, Santa Lucia Sportsman's Shooting Range.
- Meet EMS at Gate and direct them to incident location.

5. Complete the Incident Report.

- Complete the Incident Report form and submit to the Board of Directors.
- Record dates, times and names of injured persons, and any witnesses present.
- Notify the Authorities if appropriate. If accident involves a gunshot injury, notify police. If the accident involves a gunshot injury and is hunting related, Fish & Game must also be notified.

APPENDIX 1: INCIDENT REPORT FORM

Date of Incident: _____ Time of Incident: _____

1. Describe the incident (i.e., nature of safety violation and/or extent of injury):

2. Provide the names or a description of the person(s) involved in the incident: _____

3. If injury occurred, state if first aid was given and describe nature of first aid: _____

4. Location of incident and conditions of area: _____

5. Describe any evidence taken (equipment, photographs, etc.):

6. Witness Statements: Interview witnesses separately. Use attachments if needed.

A. Witness (Name): _____ Statement Attached: Yes _____ No _____

Address: _____

Phone Number: _____ Email: _____

B. Witness (Name): _____ Statement Attached: Yes _____ No _____

Address: _____

Phone Number: _____ Email: _____

7. Notes and Comments: _____

8. Incident Report completed by:

Name: _____

Address: _____

Telephone Number: _____ Email: _____

Date: _____ Signature: _____

APPENDIX 2: SLSA COMMITTEE STRUCTURE

PRESIDENT: The President is a member of all SLSA Committees. His function is to observe the Committee operations and ensure that they perform their stated objectives. The President will require each Committee Chair and each match Director to present a report of its activities at the monthly General Meeting.

VICE-PRESIDENT: The Vice-President is a member of all Committees and will share with the President the duties and responsibilities to ensure that the Committees are performing their stated objectives. In performing these duties and responsibilities the Vice-President shall have the same powers as the President.

FINANCE COMMITTEE (“FC”): The FC shall oversee all financial matters of SLSA; including banking, accounting, budgeting, and auditing. The FC shall prepare financial statements and budgets for the review and approval of the Board. The FC shall issue opinions and recommendations as to all proposed financial expenditures. The FC shall oversee the accounting, banking and auditing of Component Sales. The Treasurer shall be the committee chair. The President and the Trap Director shall be the initial vice-chairs. Other Directors and selected SLSA members may also serve on the committee.

PUBLIC RELATIONS COMMITTEE (“PRC”): The PRC shall coordinate all public relations for SLSA. This will include print, radio and television announcements and advertising, and community relations. The PRC shall also prepare and circulate intra-Association media, including the newsletter, for SLSA announcements and events. The PRC shall respond to all general members and outside inquiries. The committee chair shall be elected by the Board. The Vice-President shall be the initial vice-chair. Other Directors and selected SLSA members may also serve on the committee.

ADMINISTRATION & MEMBERSHIP COMMITTEE (“AMC”): The AMC shall oversee all administration and membership matters for SLSA. This shall include the maintenance and preparation of corporate records and minutes, the preparation, maintenance and updating of membership lists and rolls, preparing and processing membership renewals and new membership applications, and all other matters pertaining to the administration of SLSA and its members. The AMC will present rules and guidelines for “Service Credits”. The Secretary shall be the committee chair. The committee chair shall appoint a vice-chair(s). Other Directors and selected SLSA members may also serve on the committee.

SAFETY / RSO COMMITTEE (“SC”): The SC shall be responsible for enforcing all Operating Procedures and rules (“SOP”) for the Rifle and Pistol Range, the Trap and Skeet Range, the Archery Range and the Upper Range (LE Range). The SC shall also establish and operate a Range Safety Officer program. The SC shall review all security camera recordings and report any serious safety violations to the Board; recommend if the reported violation requires a hearing for disciplinary action against the member(s) in violation of the Operating Procedures; and to notify, in writing, any member committing a serious safety violation of the reason for, and time and date of the hearing. The Board shall appoint the Committee Chair and approve the selection of any vice-chair. Selected SLSA members may also serve on the committee.

IMPROVEMENT & MAINTENANCE COMMITTEE (“IMC”): The IMC shall oversee the maintenance and improvements for all SLSA facilities and ranges. The IMC shall prepare, in writing, a proposal for needed improvements and maintenance of the facilities and ranges for each calendar year, together with an itemized cost estimate and time for completion for each maintenance and improvement item. The IMC shall take all necessary steps to see the projects to completion within the approved budget. The Executive Director shall be the committee chair. The Rifle & Pistol Director and the Skeet Director shall be the initial vice-chairs. Other Directors and selected SLSA members may also serve on the committee.

SHOOTING SPORTS & EVENT COMMITTEE (“SEC”): The SEC shall oversee all events and matches held by SLSA. The SEC shall manage the match directors for all regularly scheduled matches, including Black Powder, Varmint Rifle, Junior Rifle, Trap & Skeet, Archery, Junior Shotgun, Money Shoot, and High-Power Rifle. Each Director, Officer, Match Director, and sponsor of each and every special event and shoot is a member of the committee. Selected SLSA members may also serve on the committee. The Board, acting in its official capacity, is the Committee Chair. Unless otherwise directed by the Board, the person or persons sponsoring an event, or a shoot are responsible for all aspects of the event or shoot, including its organization, staffing, management, operation, and restoration of the facility.

WOMEN’S EVENTS COMMITTEE (“WEC”): The WEC organizes shooting clinics taught by women, for women. Meet new friends and learn a sport you can enjoy for a lifetime. We want to encourage, educate, and mentor women to learn firearm handling skills in an atmosphere that is SAFE, comfortable, non-threatening, and FUN. Attend a clinic if you have no experience with firearms, want to review basic safe handling skills, or want to learn techniques that make it easier to improve your shooting skills. The Women’s Director shall be the committee chair. The committee chair shall appoint a vice-chair(s). Other Directors and selected SLSA members may also serve on the committee.

APPENDIX 3: SLSA COMMITTEE & MATCH APPLICATION

Name: _____

Address: _____

Telephone #: _____

Email: _____

I request membership in the following Committee(s) or Group(s):

(Check the Committee(s) or Group(s), you would like to serve. A description of each Committee or Group may be found on the SLSA website. If you select more than one, please indicate your preference by sequentially numbering your selections.)

Finance Committee _____

Public Relations Committee _____

Safety / RSO Committee _____

Administration & Membership Committee _____

Maintenance Committee _____

Shooting Sports & Event Committee _____

Black Powder Match Group _____

Varmint Match Group _____

Junior Rifle Group _____

Trap & Skeet Group _____

Archery Match Group _____

Junior Shotgun Group _____

High Power Rifle Match Group _____

Women's Events Committee _____

Background & Experience (Provide a brief description of your background and experience):

Date: _____

Signature

APPENDIX 4: WAIVER OF LIABILITY — RELEASE FROM RESPONSIBILITY

**— READ THESE FORMS CAREFULLY —
— IT AFFECTS YOUR LEGAL RIGHTS —**

ASSUMPTION OF RISK AND HOLD-HARMLESS AGREEMENT

I, _____, for and in consideration of permission to enter onto the land and into the buildings and premises of the SANTA LUCIA SPORTSMEN ASSOCIATION (hereinafter SLSA), for the purpose of firearms use, shooting of firearms, observing the shooting of firearms, and/or any and all other purposes whatsoever; do voluntarily and expressly, for myself, my heirs, executors, administrators, and assigns, by this instrument forever, unless revoked by me in writing, and first delivered to the Club Secretary.

1. Release, discharge, waive, and relinquish all actions or causes of action for personal injury, emotional distress, property damage, or wrongful death, and any other cause of action whatsoever, which may hereafter arise as a result of my engaging in, or being present at activities held on the land or in the buildings and premises of SLSA.; and
2. Promise and covenant not to sue; and hereby voluntarily release, waive, discharge, and relinquish any action(s) or cause(s) of action which may hereafter arise for myself and/or for my estate; and do further agree that under no circumstances will I or my heirs, executors, administrators, and/or assigns prosecute or present any claim for personal injury, emotional distress, property damage, or wrongful death against SLSA or any of its officers, agent, servants, members, guests, or employees for any cause of action whatsoever, whether the same arises by the negligence of any of said persons or otherwise; and
3. Agree that in the event any claim(s) for personal injury, emotional distress, property damage, or wrongful death shall be presented against SLSA, and/or its officers, directors, agents, members, guests, and employees, including volunteers, for my benefit or that of my heirs, executors, administrators, or assigns, then I shall immediately indemnify and hold harmless SLSA and/or its officers, agents, servants, members, guests, and employees, including volunteers, from and for any and all such claims or causes of action whatsoever, by whomever or whatever made or presented including subrogation and/or derivative claims brought by any third party or insurer, which I may cause; and including, but not limited to claims for personal injuries, emotional distress, property damage, invasion of privacy, and wrongful death; and
4. Agree that the foregoing waiver, release and hold-harmless agreement is valid until revoked in a writing delivered to the Secretary of SLSA, is to be interpreted under the laws of the State of California, and that it is intended to be construed broadly, so as to provide a waiver, release and hold harmless agreement to the maximum extent permissible under law; and that if any portion thereof is held invalid by a Court of competent jurisdiction, that the balance of the same shall continue in full legal force and effect; and
5. I acknowledge that I have been fully and completely advised of the potential for serious accidents incidental to engaging in, observing, and being in the proximity of firearm activities, including the potential for death, personal injury, emotional distress and property damage to myself and/or third parties. I understand and acknowledge that activities involving firearms and shooting involve the use of deadly weapons, and have inherent dangers that no amount of care, caution, instruction, or expertise can entirely eliminate without jeopardizing the essential qualities of the activity. My participation in these activities are strictly voluntary, and I elect to participate in spite of these risks. I therefore expressly and voluntarily assume any and all risk of death, personal injury, emotional

distress and property damage sustained while on the land and/or in the buildings and premises of SLSA, including the risk of passive or active negligence of the released parties, or latent, hidden or obvious defects in the equipment or premises used, and further expressly agree to assume all risks of loss, damage or injury whatsoever, that I or my property may sustain.

6. I understand that SLSA utilizes security cameras, and that everyone on the property is under video surveillance.

7. I understand that this is a legal document, and that by signing this document, I agree that if anyone, including myself, is hurt, or any property is damaged during my participation in this activity, I may be found by a court of law to have waived my right to present a lawsuit against SLSA and/or its officers, directors, agents, servants, members, guests, and employees, including volunteers, on the basis of any claim from which I have released them herein.

I DECLARE UNDER PENALTY OF PERJURY THAT I HAVE READ THE ABOVE, AND VOLUNTARILY SIGN THE SAME, BEING AWARE OF THE LEGAL CONSEQUENCES THEREOF; THAT THE FOREGOING IS TRUE AND CORRECT; AND THAT THIS RELEASE WAS EXECUTED ON THE DATE FIRST BELOW WRITTEN, AT ATASCADERO, CALIFORNIA.

I certify that I can legally own firearms in the State of California

Signature _____ Phone No. _____

Date of Birth _____ Today's Date _____

Address _____

PARENT/GUARDIAN INDEMNIFICATION

COMPLETE IF THE PARTICIPANT IS UNDER 18

I, _____ (Parent or Guardian Name), in consideration of _____ (Minor's name) (hereinafter Minor) being permitted by SLSA to participate in activities on its land and in its buildings and premises, agree to all of the above on my own behalf; and further agree to indemnify and hold harmless SLSA and/or its officers, directors, agents, members, guests, and employees, including volunteers, from any and all claims which are brought by, or on behalf of Minor, and which are in any way connected with such use or participation by Minor. Further, as parent/guardian of this Minor, I do consent to his/her waiver as stated above. This waiver is valid until revoked in a writing delivered to the Secretary of SLSA or upon the minor reaching his/her majority, whichever comes first.

I DECLARE UNDER PENALTY OF PERJURY THAT I HAVE READ THE FOREGOING, AND VOLUNTARILY SIGN THE SAME, BEING FIRST FULLY AWARE OF THE LEGAL CONSEQUENCES THEREOF; AND THAT THE FOREGOING IS TRUE AND CORRECT. EXECUTED ON _____ AT ATASCADERO, CALIFORNIA.

Parent or Guardian Signature _____ Print Name: _____

APPENDIX 5: Release of Liability Agreement
Special Purpose Range (SPR) use for CCW Practice
INSTRUCTOR LEAD MONTHLY WEEKEND PRACTICE

I UNDERSTAND AND AGREE that: (a) the SANTA LUCIA SPORTSMAN’S ASSOCIATION (hereinafter “SLSA”) is located at 10400 Santa Clara Road, Atascadero, California 93423; (b) SLSA owns and operates a firearm range for recreational use; (c) I want to be present at and use the SLSA Special Purpose Range (SPR) for Concealed Carry Weapons (CCW) practice; and (d) There are risks, such as physical injury, pain, suffering, disfigurement, or disability, which may occur from being present at or using the SPR.

In consideration for being allowed to use the SPR and to enter upon the premise owned and operated by SLSA, I hereby release from liability and waive my right to sue SLSA, its officers, directors, employees, volunteers, members and agents from any and all claims, including the negligence of SLSA, resulting in any physical injury, illness (including death) or economic loss that I may suffer as a result of being on or using the SPR. I assume for myself all related risks, whether known or unknown by me.

I agree to hold SLSA harmless from any and all claims, loss or damage, including costs and attorneys’ fees, suffered or incurred by any other person or entity and/or their property caused by either the actions or inactions of myself while on the premises or participating in the weekend CCW practice held at the SPR.

I agree that if any portion of this release is held invalid or unenforceable, I will continue to be bound by the remaining terms.

_____ I am eighteen (18) years or older. I have read this document and sign it freely. I understand the legal consequences of signing this document, including (a) releasing SLSA from all liability, (b) waiver of my right to sue SLSA for any injuries or damages suffered, and (c) the assumption of all risks of being present at or participating in weekday CCW practice held at the SPR.

_____ I am a SLSA member in good standing; possess a current/valid CCW holder or Law Enforcement Officer (LEO) from the state of California; only using firearms listed on my CCW permit or for LEOs, only using those firearms for which I am qualified; using only factory ammunition while on the SPR; I have read the most current version of “Standard Operating Procedure (SOP) for SLSA Special Purpose Range (SPR) Use for Concealed Carry Weapons (CCW) Permit Holders

PLEASE WRITE LEGIBLY

SLSA Member Signature/ Printed

Name _____

Address: _____

Date / Phone / Email: _____

Version – January 31, 2023, MONTHLY V1

APPENDIX 6: Release of Liability Agreement
Special Purpose Range (SPR) use for CCW Practice
INDIVIDUAL LEAD WEEKDAY PRACTICE

I UNDERSTAND AND AGREE that: (a) the SANTA LUCIA SPORTSMAN’S ASSOCIATION (hereinafter “SLSA”) is located at 10400 Santa Clara Road, Atascadero, California 93423; (b) SLSA owns and operates a firearm range for recreational use; (c) I want to be present at and use the SLSA Special Purpose Range (SPR) for Concealed Carry Weapons (CCW) practice; and (d) There are risks, such as physical injury, pain, suffering, disfigurement, or disability, which may occur from being present at or using the SPR.

In consideration for being allowed to use the SPR and to enter upon the premise owned and operated by SLSA, I hereby release from liability and waive my right to sue SLSA, its officers, directors, employees, volunteers, members and agents from any and all claims, including the negligence of SLSA, resulting in any physical injury, illness (including death) or economic loss that I may suffer as a result of being on or using the SPR. I assume for myself all related risks, whether known or unknown by me.

I agree to hold SLSA harmless from any and all claims, loss or damage, including costs and attorneys’ fees, suffered or incurred by any other person or entity and/or their property caused by either the actions or inactions of myself while on the premises or participating in the weekday CCW practice held at the SPR.

I agree that if any portion of this release is held invalid or unenforceable, I will continue to be bound by the remaining terms.

_____ I am eighteen (18) years or older. I have read this document and sign it freely. I understand the legal consequences of signing this document, including (a) releasing SLSA from all liability, (b) waiver of my right to sue SLSA for any injuries or damages suffered, and (c) the assumption of all risks of being present at or participating in weekday CCW practice held at the SPR.

_____ I am a SLSA member in good standing; possess a current/valid CCW holder or Law Enforcement Officer (LEO) from the state of California; only using firearms listed on my CCW permit or for LEOs, only using those firearms for which I am qualified; using only factory ammunition while on the SPR; a current Range Safety Officer at SLSA; hold a current First Aid and Stop the Bleed certification

_____ I have attended at least one SLSA Monthly CCW Practice session and passed the gear check and “check shoot” and have read the most current version of “Standard Operating Procedure (SOP) for SLSA Special Purpose Range (SPR) Use for Concealed Carry Weapons (CCW) Permit Holders and agree to always use the SPR with at least one other qualified SLSA member

PLEASE WRITE LEGIBLY

SLSA Member Signature / Printed Name

Address: _____

Date / Phone / Email: _____

Version – January 31, 2023, WEEKDAY V1

Appendix 7: Special Purpose Range SOP for Concealed Carry

Standard Operating Procedure (SOP) For Santa Lucia Sportsman's Association (SLSA) Special Purpose Range (SPR) Use For Concealed Carry Weapons (CCW) Permit Holders

Addendum to SLSA SOP June 2021

Approved by SLSA Board January 17, 2023

Except where called out below the most recent SLSA SOP must be followed.

Failure to follow the SLSA SOP and where applicable, the procedures below, could result in the LOSS OR RESTRICTION OF SLSA MEMBERSHIP PRIVILEGES

The four basic safety rules of gun safety will always be observed...

1. Treat every firearm as if it were loaded
2. Don't point your firearm at anything you are not willing to kill, destroy or purchase
3. Keep your finger off the trigger until sights are on target and you're ready to shoot
4. Know your target, what's in the line of fire and beyond

SPR will be open **Tuesdays and **Thursdays** during normal SLSA range hours for CCW Practice for qualified members**

Requirements to use the Upper Range for CCW Practice

- SLSA members in good standing (membership is current, etc.)
- Participant must possess be a current/valid CCW holder or Law Enforcement Officer (LEO) from the state of California
- Only firearm(s) listed on CCW permit may be used; for LEOs, only those firearms for which they are qualified with may be used
- Pass gear check (firearm / CCW license / holster, etc.) prior to use of Upper Range (this will be done by requiring the SLSA member to attend one of the SLSA monthly CCW practice sessions and having a "gear check" performed by the on-duty RSO / Instructor)
- Pass "check shoot" to ensure safe handling and proper manipulation of firearm in order to use the SPR during weekdays and to be placed on the "Buddy list" of approved shooters that will be created; to meet this requirement the member must attend a minimum of one SLSA monthly CCW practice sessions and perform satisfactorily
- Only factory ammunition is allowed on the SPR; any participant found to be using non-factor ammunition will be asked to either use factory ammunition or asked to leave the range
- No unholstered firearms (except at safety table and on firing line under RSO direction), holster must cover trigger, rigid style that does not require support hand assistance to holster (should remain open when empty)
- Ammo may NOT be handled at the safety table unless you are unloading when arriving to the practice or loading when you are leaving; shooter's firearm will be loaded or unloaded only under the direction of a RSO (want to ensure CCW firearm is unloaded / loaded safely...i.e., not in car, or outside SLSA gate, etc.)

-
- Member must hold a current Range Safety Officer (RSO) certification (NRA, CRPA, NROA, other) to use SPR for weekday CCW practice; this will provide additional level of safety training and allow CCW transport within SLSA for all CCW shooters using the upper range
- Member must hold current First Aid **and** Stop the Bleed certification to use Upper Range outside the once-a-month CCW practice offered by the Club
- Sign specific **SPR Liability Waiver** (green line on top of waiver) prior to arriving or at the range; this will then be placed on file and renewed yearly; this must be in place prior to range use; this can be signed at one of the monthly SLSA CCW practice sessions
- Participants are required to supply their own targets and frames (1"x2" wood sides with 7/16 or 1/2" hole in top to hang from screws in top support board, See image #1 in Appendix)

Check List for CCW Use of Upper Range

- Remove red flag from container and raise on flag pole prior to any shooting, take down flag when finished
- When red flag is raised eye protection should always be on and ear protection used when shooting
- Sign in to log book (name, date, etc.) whenever using the SPR (**log book creation and place to store is in process**)
- Ensure first aid kit is available at the range or on person; Stop the Bleed Station will be available but no first aid kit will be supplied by Club, must be brought by individuals using the range
- Ensure AED (if available) is current
- At least one member must have a cell phone on their person
- Make sure the Bay(s) being used is (are) in acceptable condition for use
- Ensure "dud" bucket is available (if one is not available, participant must bring their own)
- Ensure fire extinguisher is available and current
- Prior to starting activity involving any course of fire, participants must hold safety meeting and cover (as best as possible) responsibilities for...
 1. Providing medical aid – Overall, AED retrieval
 2. Calling 911 and stays on phone with them (important to say it was a training incident)
 3. Flagging emergency personnel and directs them to applicable location
 4. Taking notes and recording events (scribe)
- Ensure "This is a Cold Range" and "Safety, Safety, Safety" signs are in place; these signs will be created and permanently placed on range
- Check with each participant unknown to members that they are on the list of qualified individuals to use the SPR outside the Club's monthly CCW practice; this means they have met all of the requirements outlined above; Call Rangemaster if necessary; there is also the possibility of issuing "SLSA CCW Qual Card" (in process)
- Contact Rangemaster at least 24 hours prior to using the SPR for CCW practice outside of the once-a-month CCW practice offered by the Club (rangemaster@slsa.club)
- Only CCW Bay 3 may be used unless the SLSA Board approves and posts a different / additional use area, see Image #2 in Appendix

Safety

- If a RSO is at the lower Pistol / Rifle range, shooters must check in with him/her, so that he/she is aware that they are practicing on the SPR outside of the once-a-month CCW practice offered by the Club

-
- For use of SPR outside once-a-month CCW practice a **Buddy System** must be used – **no solitary shooters**; the CCW “Buddy List” will include name, contact information that folks can reference to obtain practice partners; placement on this list is voluntary; qualified individuals will be placed on a list containing name, contact information and certifications / qualifications that will only be available to Rangemaster and will remain **confidential (list generation in process)**
- For weekday CCW SPR use, at least one participant must serve as RSO, not shooting; can rotate within group; no more than 4 shooters per RSO in a group and no more than 12 shooters at range at one time (**3 groups of 4**)
- Paper targets only, metal targets may be used in the future, once they are approved by SLSA Board
- All firearms must be cased and uncased in designated “Safe Zone/ Safety Table”; Every Day Carry (EDC) firearm may be removed from holster to unload / load only at the “Safe Zone/ Safety Table” and done so under supervision of one of the other qualified members (**RSOs**)
- Rapid fire is allowed as long as they are done in the following manner...maximum of 3 rapid shots at any one time; shooter must wait at least 1 second before next 3 rapid shots
- Draws must be slow and controlled, standing draw only, no speed, prone or kneeling draws; this will be reassessed in 6 months
- No conceal garments to be worn for first 6 months (subject to modification); will reassess after 6 months
- IWB / OWB holsters on strong side or appendix holsters can be used; no back, purse, pocket, shoulder or ankle holsters; holster must cover trigger, kydex, hard leather or equivalent; no active retention holsters requiring an index finger release, no competition race holsters
- **Range is run as a cold range** - The normal condition of pistols not in use at the firing line is holstered and unloaded, with hammer down or striker forward and magazine removed or cylinder empty; each shooter will be directed by the RSO when to load firearm at the firing line (load and make ready...clear and make safe, show RSO)
- Magazines, speed loaders, and moon clips may be reloaded while off the firing line, but **the shooter’s firearm can be loaded or unloaded only at the firing line**
- Shooters may not bend over while at firing line while range is hot / with loaded firearm; if something is dropped, leave it there until RSO has cleared the range
- If you have a problem or malfunction you cannot clear, remain facing down range with your muzzle in a safe direction, raise your hand
- If you see something, say something!
- When complete with each course of fire participants will clear firearm and “show clear” to RSO and participant next to them...**NO LOADED FIREARMS BEHIND FIRING LINE** except when CCW holders with EDC are entering or leaving the range (see above)



Image #1

Image #1

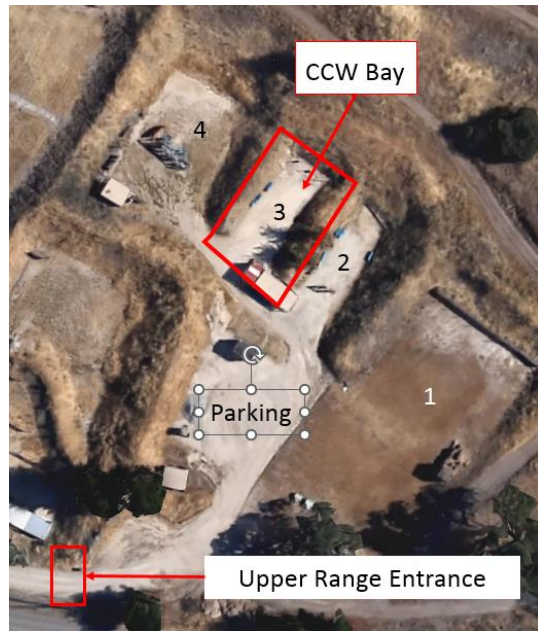


Image #2